

## SediCon Sluicer for Weerbach HPP desander, Austria

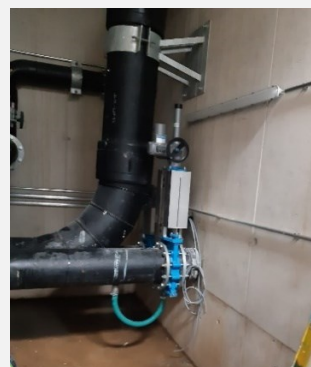
One SediCon Sluicer was installed in the desander of Weerbach HPP to remove sediments without interrupting the power production. The SediCon Sluicer was integrated with an HDPE spillway section and connection to an environmental flow outlet, all being designed by SediCon.



Weerbach desander



HDPE components



Combined Sluicer outlet and spillway

<b>Project Description:</b>	Winkeltal is a 2.0 MW run-of-river hydropower plant commissioned in 2022. The power plant operates at a gross head of 397 m and with a discharge of 1.5 m <sup>3</sup> /s.
<b>Location:</b>	The water intake (Tiroler Wehr) is located in the municipal area of both Weerberg and Kolsassberg
<b>Client:</b>	FRÖSCHL AG & Co.KG, Austria.
<b>Sediment Challenge:</b>	The river carries a heavy sediment load in spring, due to snow melting. During spring season, the sediments rapidly and constantly fill the small desander, which leads to frequent cleaning to avoid damage on the high head Pelton turbine.
<b>Solution:</b>	The original design was optimized with a new desander configuration with a shorter and wider desander where SediCon Sluicer outlet, overflow outlet and environmental flow outlet is combined into one HDPE unit. The design significantly reduced construction costs. The SediCon Sluicer can remove stones and debris up 100 mm at up to 30 m <sup>3</sup> /hour capacity. The life expectancy of components > 100 years.
<b>Implementation:</b>	The SediCon Sluicer was installed by the client with remote supervision and advice from SediCon.
<b>Results:</b>	The system was delivered on schedule and has worked to the client's fullest satisfaction since commissioning in 2022

SediCon is the leading supplier of sediment handling worldwide and provides reliable solutions with low water consumption and uninterrupted power production.

Updated 2023