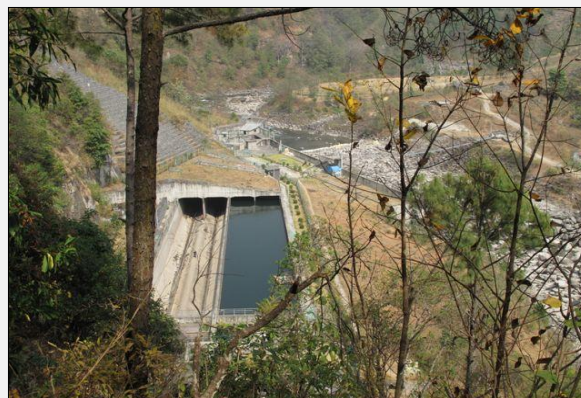


SediCon Sluicers for Khimti headworks HPP

The SediCon Sluicers are removing sediments and stones up to 200 mm at a rate of 3.000 m³ per hour.



Installation of SediCon Sluicers



Khimti HPP

Project Description:	60 MW, Run-of-River, exploits 680 m of head on Khimti Khola. Annual production of 350 GWh, nearly 15% of Nepal's electricity
Location:	Khimti Khola, Nepal <u>Lat 27° 33'2.39 N - Long 86° 10'10.79 E</u>
Client:	Himal Power Limited
Sediment Challenge:	Thick sediment deposits in the expansion zone of the desilting basins has prevented operation of the main flushing system. Manual excavation and flushing have been frequently required.
Solution:	SediCon Sluicers were installed in expansion zone in upstream end of the desilting basin. The SediCon Sluicers can be operated intermittent or continuously, and can remove at least 3000 m ³ sediment per hour.
Implementation:	The SediCon Sluicers were commissioned in September 2010.
Results:	Total capacity of the system was measured to 3 000 m ³ sediment deposits per hour. On average, 5 m ³ water was required to remove 1 m ³ sediments. Flushing discharge per SediCon Sluicer is 1,0 m ³ /s.

SediCon is the leading supplier of sediment handling worldwide and provides reliable solutions with low water consumption and uninterrupted power production.